

V.G. Young Institute of County Government School for Commissioners Courts

February 20, 2024 - February 22, 2024





USDA Rural Development

 **USDA** Rural Development
U.S. DEPARTMENT OF AGRICULTURE

Agency Overview & Programs

USDA Rural Development Texas State Director



Lillian Salerno

Lillian.Salerno@usda.gov

Lillian grew up in rural Texas and has seen firsthand the challenges faced by rural Texans. She currently serves as the Texas State Director for USDA Rural Development under the Biden-Harris Administration where she is committed to making sure rural Texas is not left behind. Along with her expertise as an entrepreneur and an attorney, Lillian has a long history working “in the trenches” for community groups, government, and diverse stakeholders to improve struggles in rural areas. Lillian was a founding member of the Whitehouse Rural Council where she was an unwavering voice for rural Americans. Salerno also served six years as a sub-cabinet official for the Obama Administration, first as the Rural Business Administrator, then as Deputy Undersecretary for the United States Department of Agriculture.

Texas Funding Totals FY 2018-2023

USDA Rural Development: STATE FUNDING TOTALS in millions of dollars						
Program	FY 2018	FY 2019	FY 2020	FY 2021	FY 2022	FY 2023
Single Family Housing	\$ 594.9	\$ 484.9	\$ 938.3	\$ 943	\$ 456	\$ 331.8
Multifamily Housing	\$ 73	\$ 105.8	\$ 127.1	\$ 89.2	\$ 78.5	\$ 69.6
Community Facilities	\$ 8	\$ 15.7	\$ 6.6	\$ 16.3	\$ 69	\$ 2.0
Water & Environmental	\$ 122	\$ 57	\$ 67.1	\$ 118.3	\$ 107.2	\$ 135.5
Business-Cooperative	\$ 119.9	\$ 41.4	\$ 83.2	\$ 188.3	\$ 150	\$ 213.9
Electric	\$ 79.7	\$ 200	\$ 551	\$ 245	\$ 313.2	\$ 346.9
Telecommunications	\$ 1.4	\$ 2.3	\$ 15	\$ 8.3	\$ 90	\$ 106.8
Fiscal year totals in billions of dollars	\$1.00	\$.908	\$1.8	\$1.6	\$1.3	\$1.2

USDA Rural Development

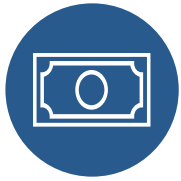


Administers over 40 Programs

Supports rural communities with loan and grant investments of over \$50 billion annually

Portfolio of investments exceeds \$220 billion

Program Areas



Business

Creates jobs by funding and growing businesses



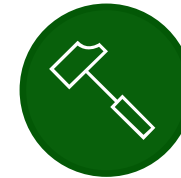
Community Facilities

Addresses needs for community infrastructure such as police, fire and rescue stations, hospitals, libraries, schools and town halls



Utilities

Addresses needs for basic services like clean water, sewers and waste disposal, electricity, and telecommunications/broadband



Housing

Works to eliminate substandard housing by helping people buy, rent or build decent housing

Rural Development Offices

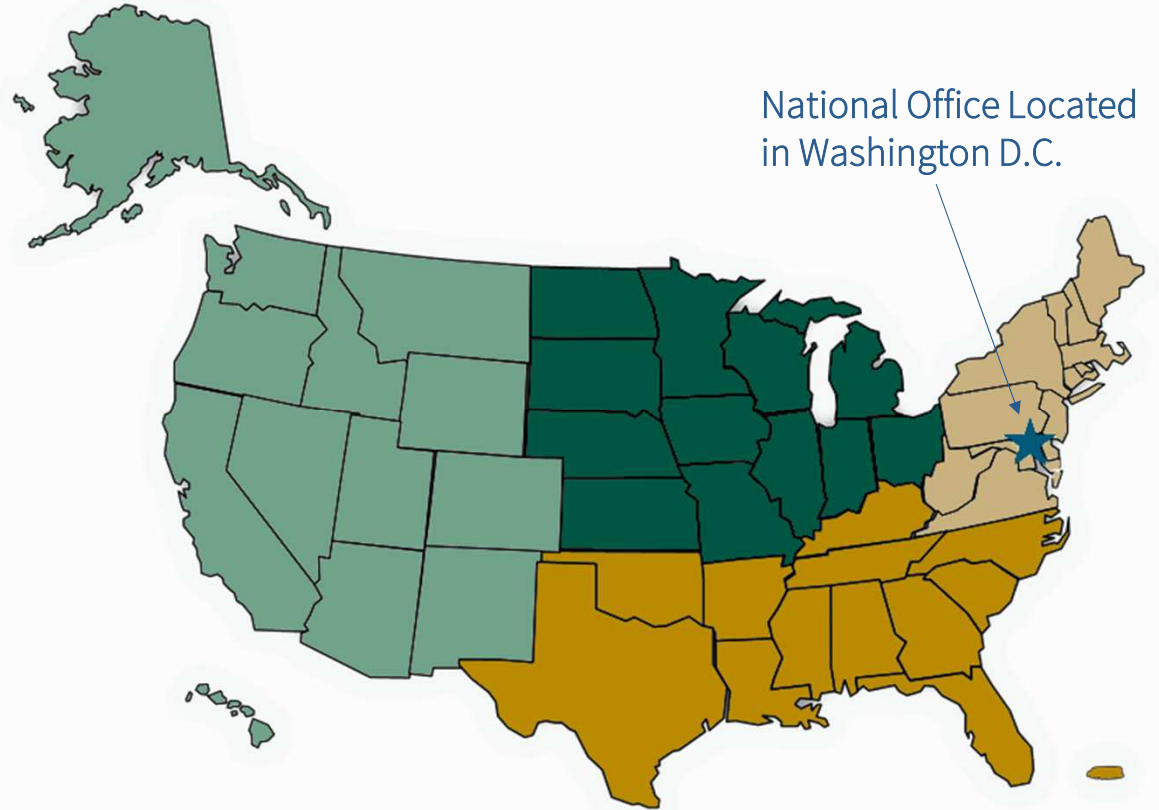


4 Regions

47 State Offices

400 Area Offices

\$234.4 Billion Loan Portfolio



What do we fund? (Types of Projects)



B&I Guarantee Loans

- Hotels
- Manufacturing
- Construction
- Industrial Supply
- Convenience Stores
- Assisted Living

REAP Guarantee Loans

- Commercial Grade Solar Projects
- Anaerobic Digesters
- Energy Efficiency Equipment and Systems for Agricultural Production and Processing

Value Added Producer Grants

- Feasibility Studies
- Business Plans
- Working capital for value added product market development and expansion

RBDG

- Technical Assistance-Type Projects
- Business Incubators
- Workforce Training

REAP Grants

- Solar/Wind
- Grain Dryers
- Lighting/HVAC
- Insulation/Cooling or Refrigeration Units
- Energy Audit/Renewable Energy Technical Assistance



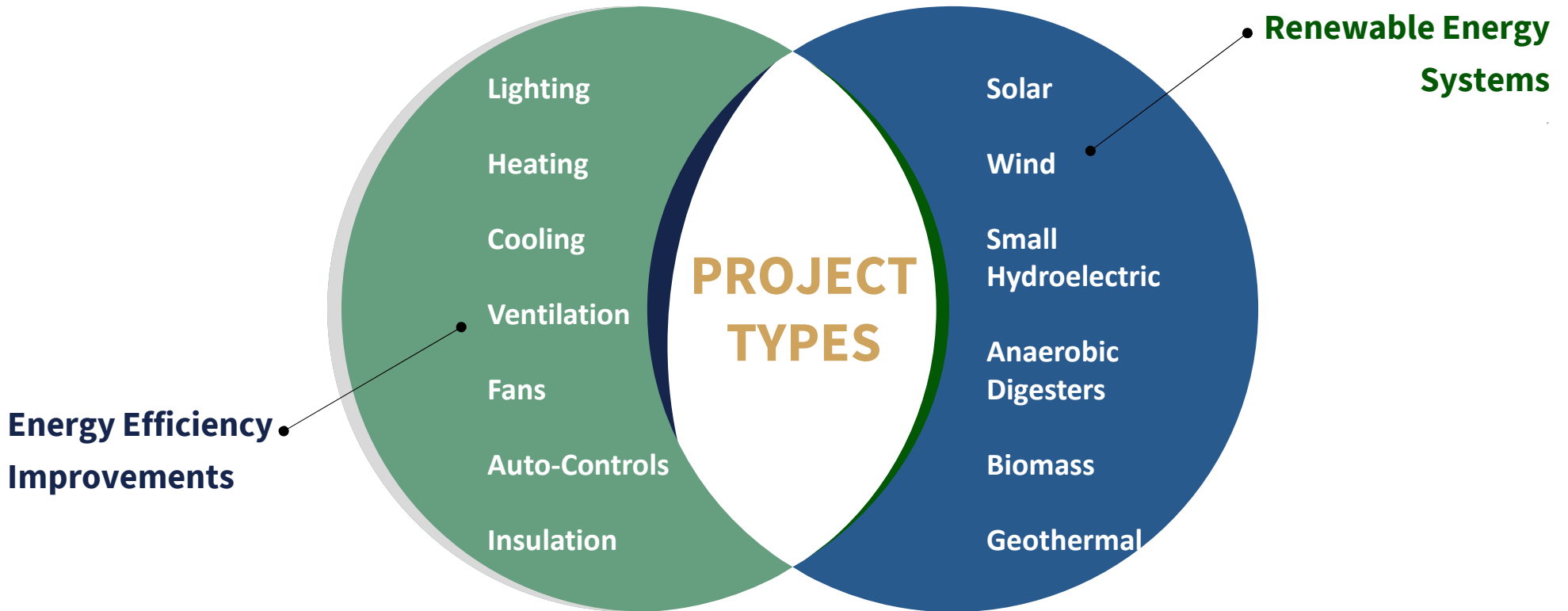
Rural Energy for America Program (REAP)



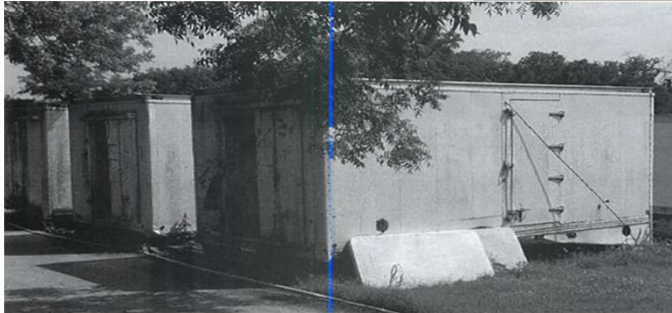
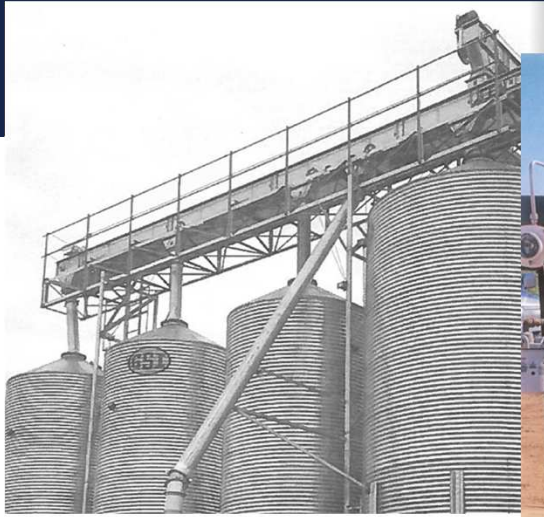
Promotes energy efficiency improvements and development of renewable energy systems for agricultural producers and rural small businesses.



Rural Energy for America Program (REAP)







REAP Complete Application Window Closing Deadlines



<p>March 31, 2024 June 31, 2024 September 30, 2024</p>	<ul style="list-style-type: none">➤ Set Aside Fund Competition-Grant Request \$20,000 or less➤ Grant Request > \$20,000➤ Combination Grant/Loan Request (Combination loan & grant applications must be submitted simultaneously by the lender. There will be separate applications for each type of assistance.)➤ Maximum amount of grant assistance to an entity will not exceed \$1,000,000 RES & \$500,000 EEI in a FY
<p>Continuous Application Cycle</p>	<ul style="list-style-type: none">➤ Guaranteed Loans for RES, EEI & Energy Efficiency Equipment and Systems (EEE) are competed on an ongoing basis. <p>*Loan must score a minimum of 50 to compete monthly *First monthly competition held once 8 applications on file</p>

Community Facilities Programs



This program provides affordable funding to develop essential community facilities in rural areas. An essential community facility is defined as a facility that provides an essential service to the local community for the orderly development of the community in a primarily rural area, and does not include private, commercial or business undertakings.



How Can Program Funds Be Used?



Funds can be used to purchase, construct, and / or improve essential community facilities, purchase equipment and pay related project expenses.

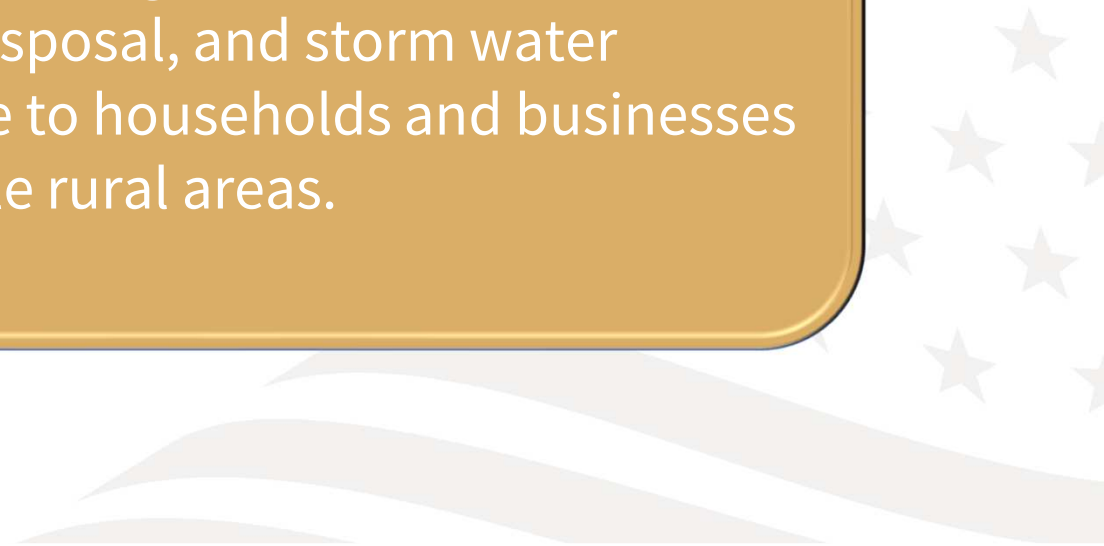
Examples of essential community facilities include:

- Health care facilities such as hospitals, medical clinics, dental clinics, nursing homes or assisted living facilities
- Public facilities such as town halls, courthouses, airport hangars or street improvements
- Community support services such as child care centers, community centers, fairgrounds or transitional housing
- Public safety services such as fire departments, police stations, prisons, police vehicles, fire trucks, public works vehicles or equipment
- Utility services such as telemedicine or distance learning equipment
- Local food systems such as community gardens, food pantries, community kitchens, food banks, food hubs or greenhouses

Water & Environmental Programs (WEP)



This program provides funding for clean and reliable drinking water systems, sanitary sewage disposal, sanitary solid waste disposal, and storm water drainage to households and businesses in eligible rural areas.



WEP: Who May Apply?



This program assists qualified applicants who are not otherwise able to obtain commercial credit at reasonable terms. Eligible applicants include:

This program assists qualified applicants who are not otherwise able to obtain commercial credit at reasonable terms. Eligible applicants include:

- Most state and local governmental entities
- Private nonprofits
- Federally-recognized tribes



Single Family Housing

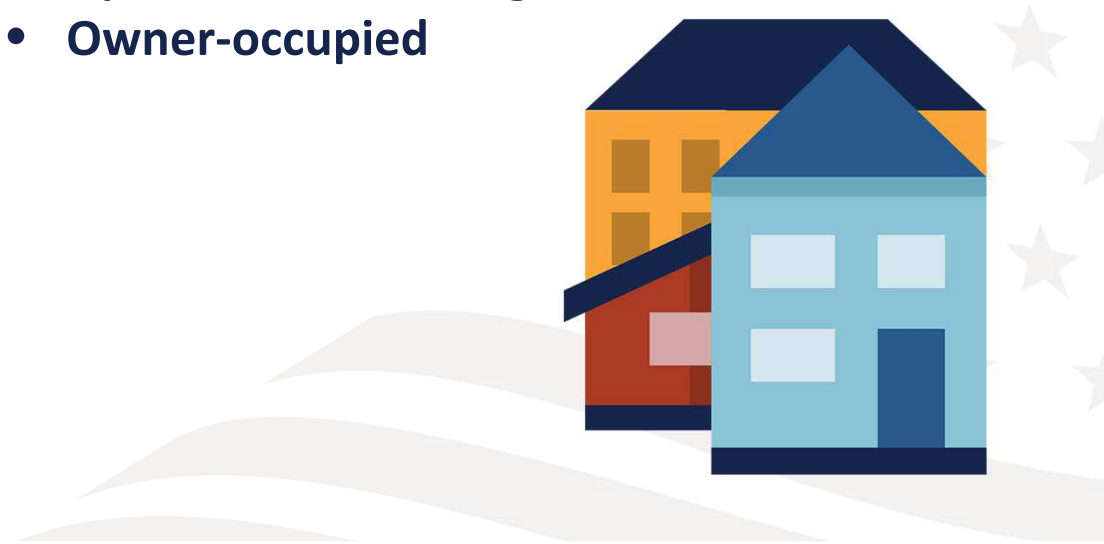


Direct Loans

- Owner-occupied
- Low and Very Low income families
- May provide payment subsidy
- Up to 100% financing

Guaranteed Loans

- Moderate income families
- Up to 100% financing
- Owner-occupied





USDA is an equal opportunity provider, employer, and lender.

